



Closed Loop Sensor



805/964-9119 FAX 805/967-8789
 Box 152, Goleta, CA 93116
 e-mail:sales@amploc.com
 www.amploc.com

Nominal Rating 200A rms

CS200A-P

Electrical Data

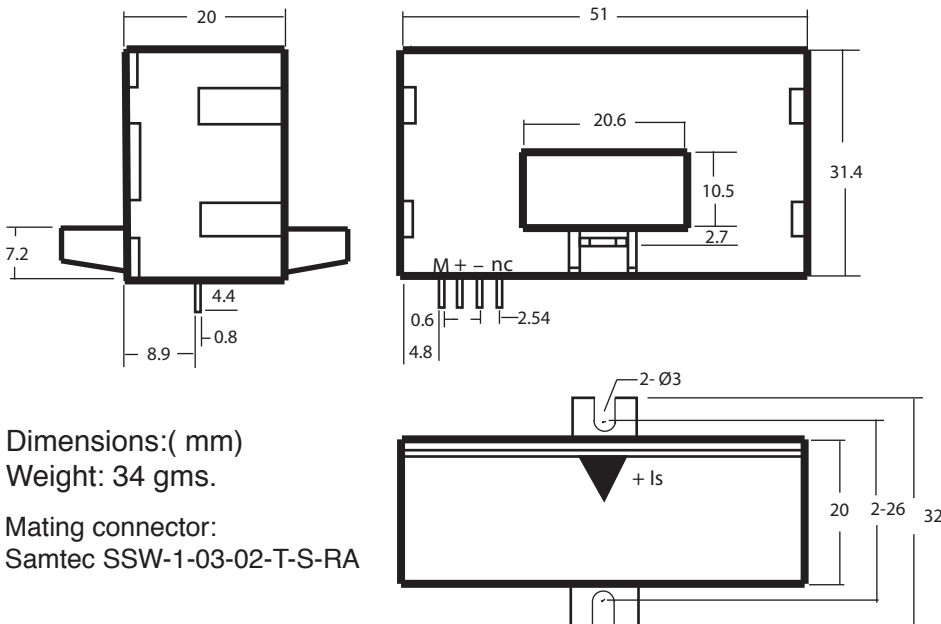
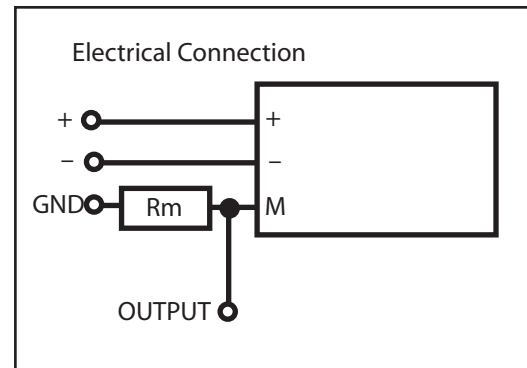
- Nominal current(I_n) ±200A rms
- Current range 0~ ±400A peak
- Nominal output current 100 mA
- Turns Ratio 2000/1
- Measuring Resistance (R_m) ref. figure 1
- Overall accuracy at 25°C 0.5%
- Supply voltage ±12V ~ ±18V
- Current consumption 15mA + output current

Dynamic Performance

- Null offset current. Max.0.2mA (25°C)
- Thermal drift offset current Max. 0.3 mA (-25°C to 85°C)
- Linearity: better than 0.1%
- Response time better than0.6μS
- di/dt: better than 70A/μS
- Frequency range: DC to 250KHz

Figure1 Maximum value of the measuring resistance

At maximum input amp-turns (peak)	200 A•T	300 A•T	A•T	A•T
Supply voltage				
±12V	15 Ω			
±15V	40 Ω	3Ω		
±18V				



Dimensions:(mm)
 Weight: 34 gms.

Mating connector:
 Samtec SSW-1-03-02-T-S-RA

Note

- Busbar temperature should not exceed 100°C .
- A positive output voltage is obtained on terminal M when the input current flows in the direction of the arrow.



Closed Loop Sensor

Nominal Rating 300A rms

CS300-C

Electrical Data

- Nominal current(I_n) **300A rms**
- Current range **0~ ±2400A peak***
- Nominal output current (I_m) **150 mA**
- Turns Ratio **2000/1**
- Measuring Resistance (R_m) **ref. figure 1**
- Overall accuracy at 25°C **0.5%**
- Supply voltage **±12V ~ ±30V**
- Current consumption **25mA + output current**

* at ±30V power supply, R_m ≤ 1Ω, 25°C

Dynamic Performance

- Null offset current. Max.0.2mv (25°C)
- Thermal drift offset current
Max. .3mA (0°C to 70°C)
- Linearity: better than 0.1%
- Response time better than 1μS
- di/dt: better than 50A/μS
- Frequency range: DC to 100KHz

General Data

- Sensor housing: Fire retardant UL94V-O
- Isolation voltage: 5kV/50Hz/1min.
- Operating temperature: -25°C to + 85°C
- Storage temperature: -40°C to + 100°C

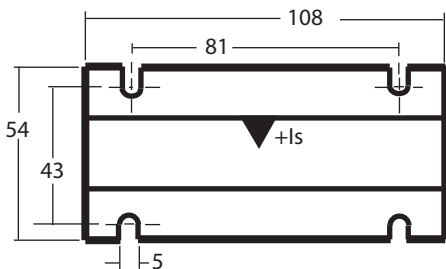
Note

- Busbar temperature should not exceed 100°C
- A positive output voltage is obtained on terminal M when the input current flows in the direction of the arrow.

Fig. 1 Maximum value of measuring resistance

Supply voltage	At maximum input amp-turns (peak)			
	300 A•T	500 A•T	1000* A•T	2400* A•T
± 12V	50Ω	25Ω	-	-
± 15V	70Ω	30Ω	-	-
± 18V	90Ω	40Ω	-	-
± 24V	130Ω	65Ω	25Ω	-
± 30V	170Ω	90Ω	30Ω	1Ω

* Derate according to duty cycle.



Dimensions:(mm)
Weight: 200 gms.

